

AW Screen Frame Cutter

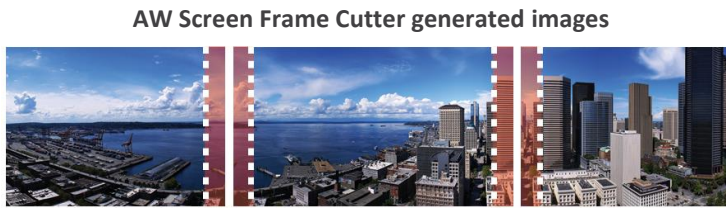
Ref. AWSFC



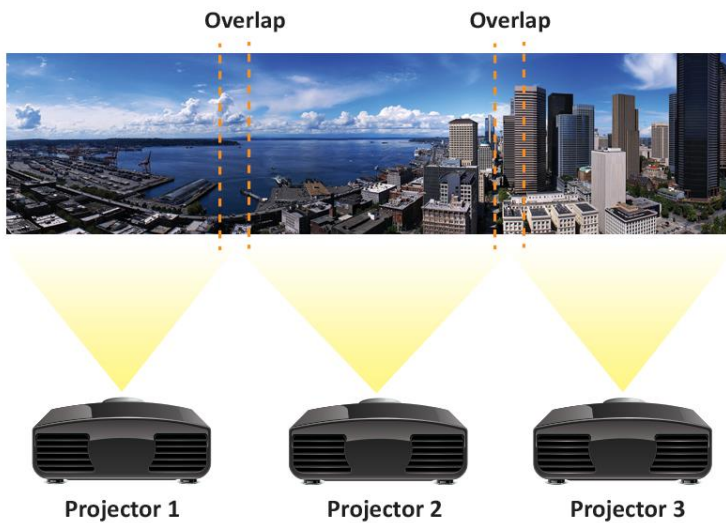
Split any wide-screen image into multiple still backgrounds for your Soft Edge Blending or your Custom Canvas



Source



AW Screen Frame Cutter generated images



Overlap

Overlap

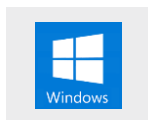
Projector 1

Projector 2

Projector 3

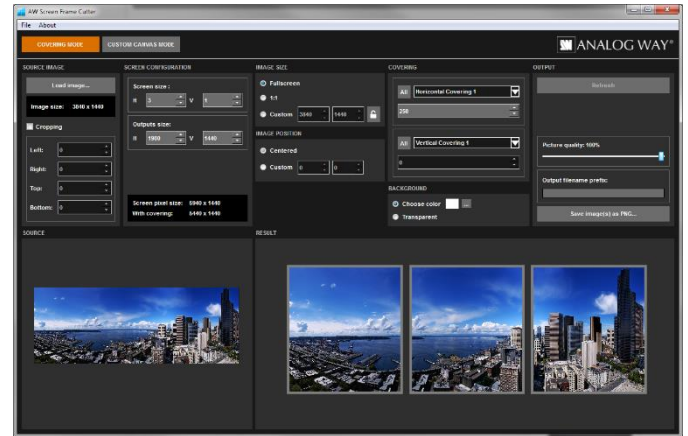
AW Screen Frame Cutter

AW Screen Frame Cutter is a free application that helps you split any wide-screen image into multiple background pictures either in regular format for your multi-projector Soft Edge blending (with overlaps), or in a fully customized format for your multi-display installation, taking care of the physical intervals between displays.

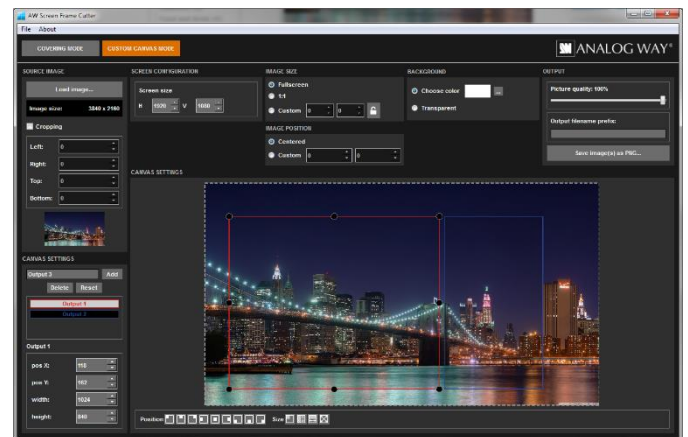


AW Screen Frame Cutter is available on www.analogway.com

Covering Mode



Custom Canvas Mode



AW Screen Frame Cutter at a glance

- ▶ Configure the Soft Edge horizontal and vertical size
- ▶ Configure the Soft Edge overlapping regions
- ▶ **New!** Custom Canvas mode
- ▶ Configure the physical intervals between displays
- ▶ Configure output resolution
- ▶ Configure image settings (size, position and background color)
- ▶ Input formats supported: BMP, JPG, PNG, TIFF and GIF
- ▶ Output format: PNG
- ▶ Ability to save and restore tool state and configuration
- ▶ Available for Windows and Mac OS

Specifications subject to change without prior notice

AWSFC_EN-04/28/2018