

# QUICK START GUIDE

## AW Browser



ANALOG WAY®  
Pioneer in Analog, Leader in Digital

Thank you for choosing **Analog Way** and **AW Browser**. By following these simple steps, you will be able to use the Web RCS of a VIO 4K or any LiveCore™ unit within minutes.

### SYSTEM REQUIREMENTS



**Windows:** Microsoft® Windows® 7 or above, 200 MB of available hard-disk space for installation



**Mac OS:** Mac OS X v10.15 or above, 200 MB of available hard-disk space for installation.

### OVERVIEW

**AW Browser** is a “custom browser” application designed to provide specific access to Analog Way devices based on Flash technology such as the **VIO 4K** and the **LiveCore™** series. Once installed on your computer, use **AW Browser** to connect your **VIO 4K** or **LiveCore™** processor as you previously did with popular browsers (before Flash end-of-life).

**AW Browser** is not a regular browser that allows you to browse the Internet. It rejects access to named URLs and restricts access to local IP addresses only. In addition, **AW Browser** systematically blocks pages that contain Flash modules except those developed, signed, and certified by Analog Way.

Using **AW Browser** is recommended for real units and for virtual sessions created with AW Simulator.

For more information, please refer to the **VIO 4K** or **LiveCore™ User Manual** or contact Analog Way Technical Support.

### QUICK INSTALL & SETUP

Go to [www.analogway.com](http://www.analogway.com) to find the latest version of the **AW Browser** installer.

#### • Installing AW Browser on Windows

Download the latest version of the **AW Browser** installer for Windows (the file name is **AW\_Browser\_<version>.exe**). Double-click this file to start installing **AW Browser**.

A shortcut to **AW Browser** can be automatically created on the desktop during the installation.

#### • Installing AW Browser on Mac OS X

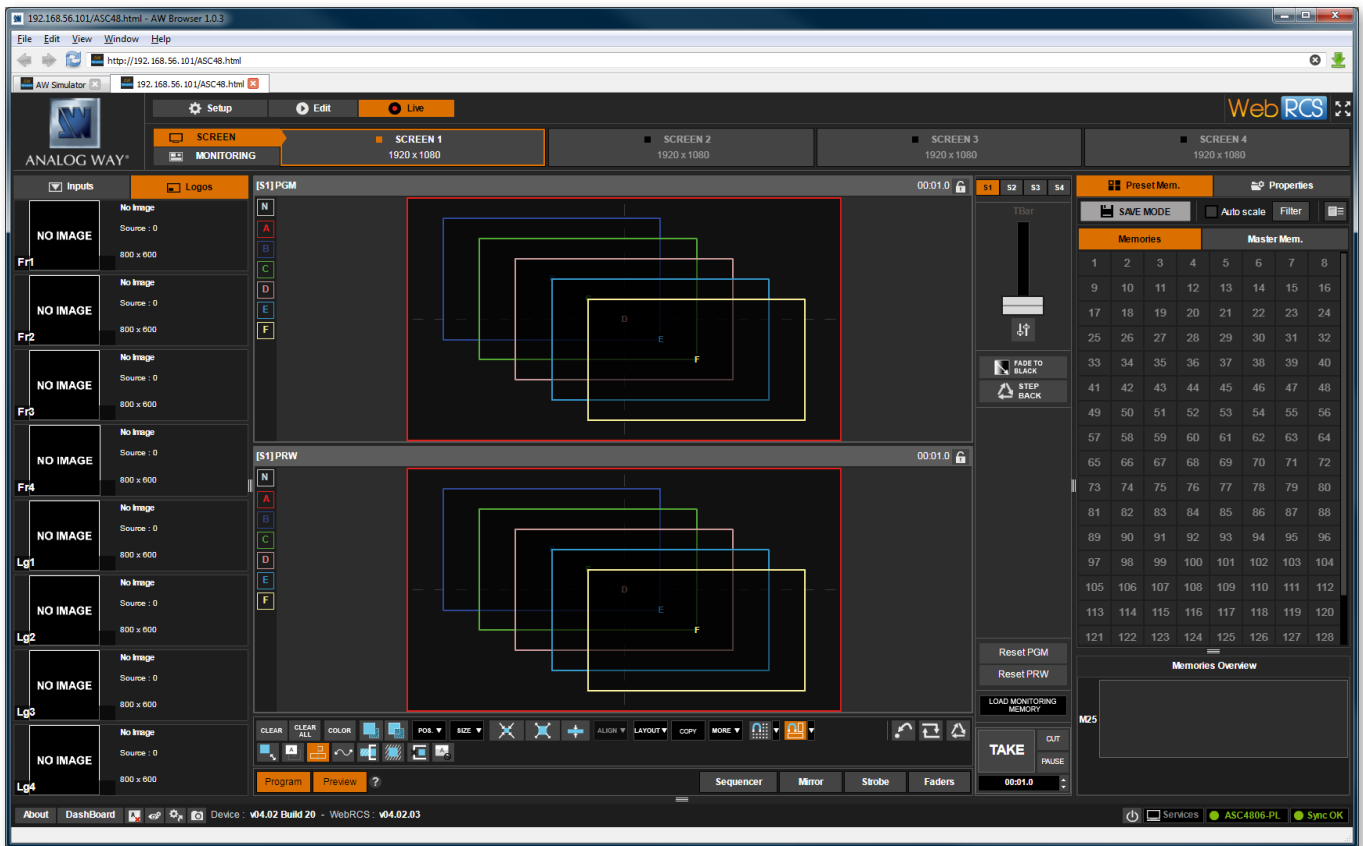
Download the latest version of the **AW Browser** installer for Mac (the file name is **AW\_Browser\_<version>.dmg**). Double-click this file to show its contents then drag and drop the **AW Browser** application into / *Applications* to start the installation.

A shortcut to **AW Browser** is automatically created on the dock during the installation.

#### • Repairing / Upgrading AW Browser

Upgrade **AW Browser** by following the same procedure as a normal installation.

# USE AW BROWSER



AW Browser acts like a regular web browser and features multiple pages and tabs.

## • Open the Web RCS using AW Browser

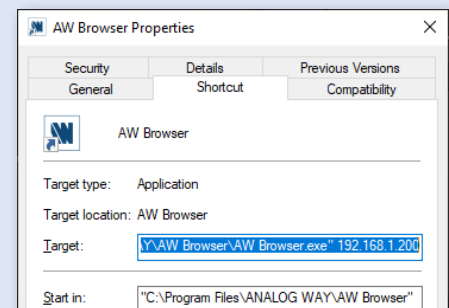
1. Run **AW Browser**.
2. Enter the unit **IP address** in the address bar (**192.168.2.140** by default for real units and **192.168.56.101** by default for AW Simulator).

# CUSTOM IP ADDRESS

It is possible to modify the **AW Browser** desktop shortcut to open with a custom IP address.

For example, on Windows:

1. Right-click the **AW Browser** shortcut and select **Properties**.
2. In the **Target** field, enter the IP address at the end of path.  
Example: **C:\Program Files\ANALOG WAY\AW Browser\AW Browser.exe» 192.168.1.200**



# GOING FURTHER WITH VIO 4K AND LIVECORE™

For complete details and operations procedures, please refer to the **VIO 4K** and **LiveCore™** User Manuals and our website for further information: [www.analogway.com](http://www.analogway.com)