

QUICK START GUIDE

Alta 4K Simulator



ANALOG WAY®
Pioneer in Analog, Leader in Digital

Thank you for choosing **Analog Way** and **Alta 4K Simulator**. By following these simple steps, you will be able to simulate and use the Web RCS of any Alta 4K unit within minutes.

SYSTEM REQUIREMENTS

Alta 4K Simulator



Windows: Microsoft® Windows® 10 or above, 200 MB of available hard-disk space for installation
Screen resolution: 1920x1080 minimum.



macOS: macOS X v10.15 (Catalina) or above, 200 MB of available hard-disk space for installation.
Screen resolution: 1920x1080 minimum.

OVERVIEW

Alta 4K Simulator allows you to simulate any **Alta 4K** seamless presentation switcher on your PC or Mac. Launch the integrated Web-based graphic user interface (Web RCS), interact with the virtual device to design and prepare a show on the road as you would with a real device.

You can then export the show to a USB drive and import it straight into your switcher (firmware versions must match). Configurations exported from real devices can also be imported to a **Alta 4K Simulator** session with similar resources (Operating modes, Analog and Dante audio card, etc.).

For more information, please refer to the **Alta 4K User Manual** or contact Analog Way Technical Support.

QUICK INSTALL & SETUP

Go to www.analogway.com to find the latest version of the **Alta 4K Simulator** installer.

• Installing Alta 4K Simulator on Windows

Download the latest version of the **Alta 4K Simulator** installer for Windows (the file name is **Alta_4K_Simulator_<version>.exe**). Double-click this file to start installing **Alta 4K Simulator**.

A shortcut to **Alta 4K Simulator** can be automatically created on the desktop during the installation.

• Installing Alta 4K Simulator on macOS X

Download the latest version of the **Alta 4K Simulator** installer for Mac (the file name is **Alta_4K_Simulator_<version>.dmg**). Double-click this file to show its contents then drag and drop the **Alta 4K Simulator** application into */Applications* to start the installation.

A shortcut to **Alta 4K Simulator** is automatically created on the dock during the installation.

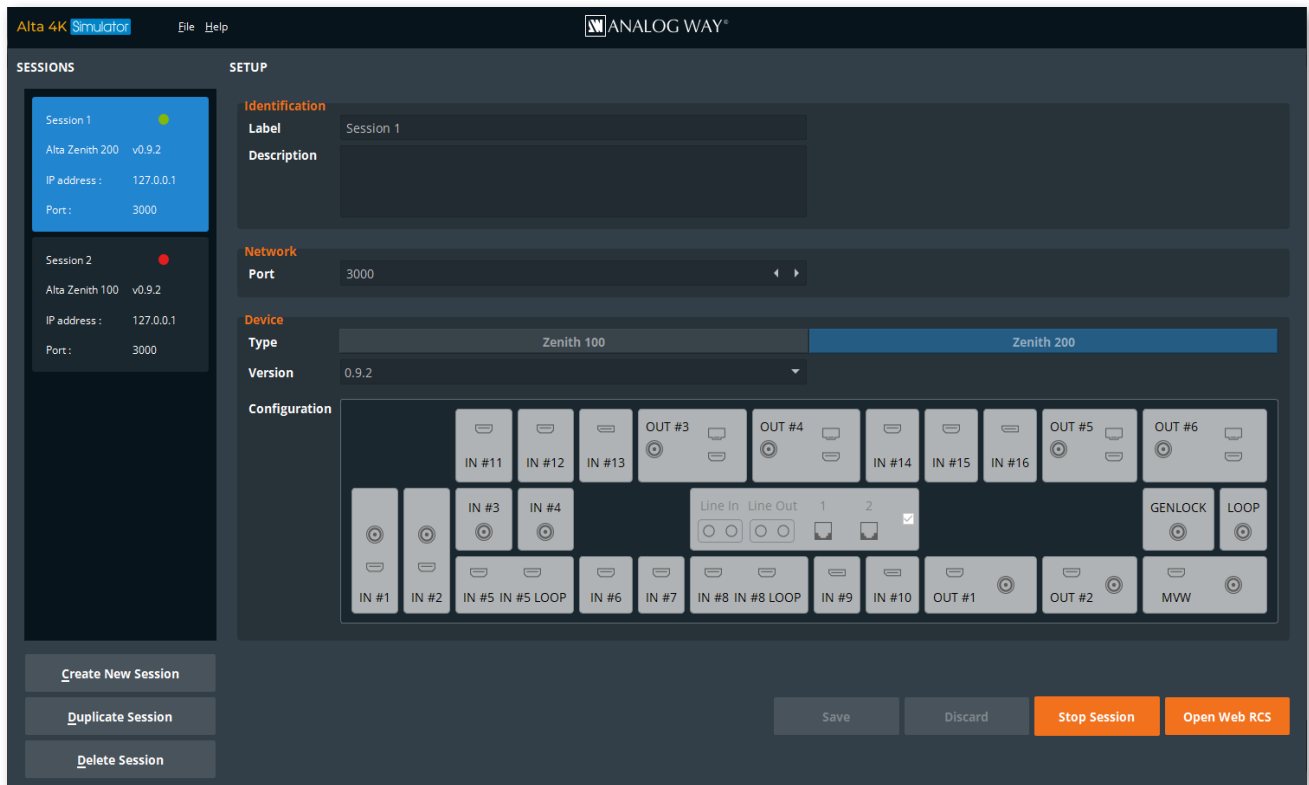
• Repairing / Upgrading Alta 4K Simulator

Upgrade **Alta 4K Simulator** by following the same procedure as a normal installation.

When reinstalling or upgrading **Alta 4K Simulator**, existing sessions are saved.

Note: The latest version is installed by default. To add an earlier version, click on **File>Package manager**, choose the version you want to install and click **Apply**.

USE THE ALTA 4K SIMULATOR



Configure any Alta 4K device with the simulator and save it in a session. The **Alta 4K Simulator** is able to manage multiple sessions with different device configurations.

Note: - Only one session can be run at a time.
- It is not possible to update a firmware version in a simulation session.

• Create a session - Configure a Alta 4K unit

1. Run **Alta 4K Simulator**.
 2. Click **Create New Session**.
 3. Set the configuration for the session:
 - **Label:** Enter a label for this session.
 - **Description:** Enter details for this session.
 - **Port:** Change the port number if needed (**3000** by default).
 - **Type:** Select the Alta 4K device to simulate.
 - **Version:** Select the firmware version of the Alta 4K device.
 - **Configuration:** Check or uncheck the Analog and Dante audio optional card.
 4. Click **Save** to save the selected session.
 5. Click **Start Session** to simulate the selected session.
 6. Click **Open Web RCS** to open the session in the default web browser.
- It is also possible to enter the IP address in a web browser to open the session (**127.0.0.1:3000** by default).

After starting a session, it may take some time to be running and ready. Refresh the web page if needed.

For more details on the Web RCS, please refer to the Alta 4K User Manual.

- **Stop a session - Save a show configuration**

Note: It is important to stop a session to save the changes made in the simulation sessions.

When a session is opened in the **Alta 4K Simulator**, click **Stop Session** to close the session and save the changes made during this session.

- **Start an existing session**

Sessions are saved in the computer storage. When closing and restarting the **Alta 4K Simulator**, it is possible to start an existing session.

1. Run **Alta 4K Simulator**.
2. Click a session in the left panel.
3. Click **Start Session** to simulate the selected session.
4. Click **Open Web RCS** to open the session in the default web browser.

- **Duplicate a session**

1. Run **Alta 4K Simulator**.
2. Click a session in the left panel.
3. Click **Duplicate Session** to create a new session with the same parameters.

- **Delete a session**

Note: This cannot be undone and all configurations, images and shows related to the session will be lost.

1. Run **Alta 4K Simulator**.
2. Click a session in the left panel.
3. Click **Delete Session** to delete the selected session.

PASSWORD PROTECTION

It is possible to enable password protection for the Web RCS in **Dashboard** > Security.
The default password is **11:22:33:44:55:66** when using the **Alta 4K Simulator**.

Caution: If lost, the password cannot be reset to default when using the Alta 4K Simulator.

STILL IMAGES IN THE WEB RCS

Still images features are fully supported by **Alta 4K Simulator**, they work as if using a real device.

- **Transfer still images from a computer to the simulated device**

1. Open the Web RCS and go to **Library**.
2. On the computer file browser, select one or multiple images (or a folder).
3. Drag and drop the selection in the **Drop images or folder of images** block.
Or click the block to open the file explorer and select image files to transfer.
4. Click **Upload Images**.


The selected images are imported in the Library and can be loaded as Foreground and Background images.

Note: - The image Library is saved in the session of the **Alta 4K Simulator**.
- The entire image Library is copied when the session is duplicated in the **Alta 4K Simulator**.

EXPORT / IMPORT WEB RCS CONFIGURATION

•Export a simulated device configuration

It is possible to export a configuration from a simulated device.


1. In the top bar of the Webc RCS, click , then **Save / Load**.
2. In the **Save** panel, select the current configuration.
3. In the filters, select the settings to export.
4. Click **Export**.

The configuration file is downloaded to the computer.

Note: the still image Library (image files) and all image parameters can be included in the configuration file using the filters.

•Import a simulated device configuration

It is possible to import a configuration created with **Alta 4K Simulator** to a real Alta 4K device.

1. In the top bar of the Web RCS, click , then **Save / Load**.
2. In the **Load** panel, click **Upload file** and select the configuration file to import.
Or drag and drop the configuration file from the computer file explorer to the **Upload file** area.
The configuration is extracted and conflicting settings are grayed out in the filters (version incompatibility, obsolete information, device logs, etc.).
3. In the filters, select the settings to import.
4. Select how to merge the images in the Library.
5. Click **Load**.

The configuration file is loaded to the Alta 4K device and applied to the current configuration.

THIRD PARTY CONTROLLERS

The simulated Web RCS is also able to receive commands from external controllers such as:

- Simple REST API (HTTP) and advanced TCP protocol based on JSON
- Crestron driver and AW VideoCompositor for Alta 4K

GOING FURTHER WITH ALTA 4K

For complete details and operations procedures, please refer to the **Alta 4K User Manual** and our website for further information: www.analogway.com